

## RULES

Entry Fee \$1.00 per exhibit

No premiums will be issued for placings.

New for 2021: Best of Show Award  
sponsored by Dennis Kordes

1. Entries for the following departments will ONLY be accepted on Saturday, July 17<sup>th</sup> from 8:30a.m. - 11:30 a.m. (Judging will occur the same afternoon. Late entries will not be judged.)

❖ ANTIQUES	❖ QUILTS
❖ CRAFTS	❖ SEWING
❖ NEEDLEWORK	❖ WOODWORKING
❖ PHOTOGRAPHY	❖ WOODCARVING

Accepted and judged Saturday ONLY.

2. Entries for the following departments will ONLY be accepted on Monday, July 19<sup>th</sup> from 7:00 a.m. - 11:00 a.m. (Judging will occur the same afternoon. Late entries will not be judged.)

❖ ART	❖ FOOD
❖ BAKING	PRESERVATION
❖ CERAMICS	❖ PRODUCE
❖ CHINA PAINTING	❖ BEER / WINE
❖ FLOWERS	

Accepted and judged Monday ONLY.

3. **Release of Exhibits.** The Open Class Building will close to the public at 9:00 p.m. Friday, July 23<sup>rd</sup>. Exhibits will be released from 9:30 p.m. until 10:30 p.m. on July 23<sup>rd</sup> and from 9:00 a.m. until 10:30 a.m. on Saturday, July 24<sup>th</sup>.

4. No Entries will be accepted this year that have taken first prize ever before in Knox County.

5. Exhibits must have been completed within the past 2 years.

6. All Open Class Exhibitors must be at least 16 years of age *but are NOT required to be residents of Knox or surrounding counties.*

7. All articles must be handmade.
8. Exhibitors are limited to two entries in each class, but may exhibit in as many classes as they desire.
9. Every precaution will be taken to insure the safety of the articles entered, but in no case will the management be held responsible for the loss or damage of any article or exhibit.
10. All entries must have a class. Otherwise, exhibits will not be accepted. If there is only one (1) exhibit in the class, it will be judged on merit and will not automatically receive a blue ribbon.
11. Those receiving Grand Champion ribbons will have an opportunity for a picture with the Vincennes Sun Commercial on Tuesday July 20<sup>th</sup> at 10AM.
12. Fair reserves the right to dispose of perishables.
13. All judging is blinded. Judges do not see exhibitor information.
14. If an entry can be exhibited in more than one category, the exhibitor shall decide which category to place the exhibit.

#### Special Rules for Baking

All food exhibits must be submitted on paper plates, cardboard, or in disposable pie pans, and be covered with clear plastic wrap or in a sealed zip-top plastic bag.

**For Baked Product Competitions:** "Filling, frosting, glazing, pie filling, and meringue whether uncooked or cooked ARE NOT PERMITTED to contain cream cheese, whipped cream, un-pasteurized milk, or eggs/egg whites (pasteurized eggs or eggs cooked to 160 degrees may be used).

Home-canned fruits, vegetables, or meats ARE NOT PERMITTED in products.

Contestants should carefully wash their hands and make sure that their hands do not have any open cuts before preparing foods.

Whenever possible, baked products should be transported and stored in chilled coolers (41 degrees).

## ANTIQUES

Superintendent: Rita Clark

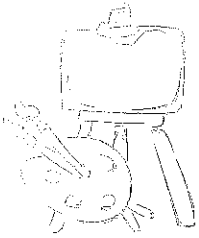
THE FAIR BOARD ASSUMES NO LIABILITY OF CLAIMS FOR THE SAFETY OF EXHIBITS WHILE ON THE FAIRGROUNDS. ALL ENTRIES ARE TENDERED AND ACCEPTED ON THAT CONDITION.

### RULES:

1. Antiques must be 50 years old to qualify as an antique in this department
2. No exhibit may be larger than 30" square or 12" in depth or in excess of 20 pounds.
3. Any collection will be entered in Miscellaneous

### CAN BE SINGLE ITEM OR COLLECTION OF 5-20 ITEMS

Book	Needlework Item
Bottle	Newspaper
China, any item	Hand Tool
Cookie Jar	Hat
4-H Item	Photography (photo-camera)
Fruit Jar	Political Item
Games/toys/dolls	Post Card
Glassware, any item	Pottery
Jewelry	Rail Road
Kitchen Item	Teapot
Knox Co. Memorabilia	Wood Item
Military Item	Miscellaneous
Musical Item	



## ART

Superintendent: Debbie Grubb

- ~All pictures must have a stiff backing
- ~Must be ready to hang with wire fasteners
- ~Must be entered in the name of the artist

<p><b>ACRYLICS</b>          Abstract          Portrait or Figure          Scenes          Still Life          Animals          Miscellaneous</p>	<p><b>OIL PAINTING</b>          Abstract          Portrait or Figure          Scenes          Still Life          Animals          Miscellaneous</p>	<p><b>WATERCOLOR</b>          Abstract          Portrait or Figure          Scenes          Still Life          Animals          Miscellaneous</p>
<p><b>DRAWING AND SKETCHING</b>          Pen &amp; Ink          Pencil          Charcoal          Pastels (Chalk)</p>	<p><b>Tole Painting &amp; Folk Art</b>          Dried Gourds          Dolls          Glassware          Metal          Stone/Slate          Wood          Miscellaneous</p>	<p><b>STAINED GLASS</b>  <u>Hanging Piece</u>          -Original Design          -Original Pattern   <u>Standing Piece</u>          -Original Design          -Original Pattern</p>
<p><b>MISCELLANEOUS</b>          Picture-Paint by Number          Coloring by Adults          (Crayon, Colored Pencil,          Markers)          Metal Punch Work-any          Models</p>	<p><b>POTTERY</b>          Functional Piece, fired finish          Functional Piece, non-glazed finish          Nonfunctional Piece, fired finish          Nonfunctional Piece, non-glazed finish          Miscellaneous</p>	
	<p><b>SCULPTURES</b>          Metal          Clay          Other Medium</p>	

## BAKING

Superintendent: Suzan Morgan



Please refer to 'Special Rules for Baking' in front of booklet

<p><b>COOKIES</b>          (Exhibit 4 Cookies)          Bar Cookie          Brownies - 2" square          Drop Cookies          Miscellaneous</p>	<p><b>CAKES</b>          Variation of Cake Mix- With or without frosting          Cake made from scratch- with or without frosting          Decorated cake or cupcakes (exhibit 4)</p>
<p><b>CANDY</b>          (Exhibit 4 pieces)          Fudge - any variety          (1 1/2" to 2" sq.)          Miscellaneous</p>	<p><b>SHORTCUT BREADS &amp; PASTRY</b>          Non-perishable baked item made from refrigerated biscuit dough, crescent roll dough or frozen bread or roll dough.</p>
<p><b>PIES (size 8" or 9")</b>          Berry or Fruit</p>	<p><b>QUICK BREADS</b>          Muffins (4) or loaf (1)          Gluten free (must include recipe)</p>
	<p><b>YEAST BREADS &amp; ROLLS</b>          Loaf (1) or Rolls (4)          Specialty loaf (1) or Rolls (4)</p>

One piece will be for judging, one piece will be for exhibit.  
 The rest will be sold after judging (with exhibitor's permission) for building maintenance.

CERAMICS - CHINA PAINTING

Special for 2021: Submit entries to Art Department

This department includes professional and non-professional categories

CHINA/PORCELAIN PAINTING

All entries must be hand-painted, decals are NOT acceptable.

- Porcelain Bisque or Glazed Surfaces
  - Portrait/Figure
  - Flowers
  - Roses/Iris/ Mums
  - Fruits/ Berries
  - All God's Creatures
  - Landscapes/Holidays
  - Special Techniques (enamel, gold, etching, pen-work, etc.)
  - Miscellaneous

CERAMICS

FIRED FINISH

- Glazed
- Under-glazed
- Miscellaneous

UNFIRED FINISH

- Christmas/Other Holidays
- Steins/Containers
- Animals/Garden
- Americana/Indians
- Mystical
- Religious
- Miscellaneous

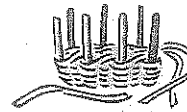
CRAFTS

Superintendent: Reba Spanger

(Exhibits must be created by the exhibitor)

- DOLLS**
  - Doll - Handmade (cloth or porcelain)
  - Doll Accessories/Costumes

- Scrapbooking**
  - Handmade
  - Digital



- BASKETRY** (Reed or Fabric) (handwoven)
  - Small
  - Large
  - Unusually Shaped
  - Miscellaneous

- Trash to Treasure**
  - Items given "new life" by transforming them into something new
  - Furniture
  - Home Décor
  - Wearables
  - Miscellaneous

- Paper Crafts**
  - Handmade Card
  - Rubber Stamping
  - Collage (paper items only)
  - Decoupage
  - Scherenschnitte
  - Miscellaneous

- ARTIFICIAL FLOWERS**
  - Flowers (exhibit3-5)
  - Flower Arrangement -artificial dried, silk in vase
  - Flower Arrangement -artificial dried, silk combination bouquet
  - Corsages & Nosegays

- Jewelry**
  - Original Design
  - Natural
  - Glass/Crystal
  - Metal
  - Miscellaneous

- Holiday Crafts**
  - Wall or Door Decorations
  - Centerpiece (under 12")
  - Misc. Decorations

## FLOWERS

Superintendent: June Mengedoht

~No artificial flowers

~2'x2' space limit-height unlimited

~Try to replace flowers during the week to keep fresh~

### ARRANGEMENTS

Kitchen Fun-(an arrangement suitable for a kitchen or something found in a kitchen)

Miniature Bouquet-(teacup or smaller)

Arrangement for Child's Room-(any flowers, any accessories)

Roadside or Wild Flowers-(any accessories)

Winter Bouquet (dried flowers)

### BEST POTTED

Most Attractive Flowering Plant

African Violets

Best Foliage Plant

Most Unusual Plant

Planter-(3 or more different plants)

(No artificial flowers in planters)

Hanging Baskets-10" across top

(Not including foliage)

Herbs-(1 or more in single pot)

Fairy Garden

### PERFECTION OF BLOOM

(Must be grown by exhibitor)

*Exhibited in a bottle*

(Leave greenery on stem)

Dahlias

Gladiolas-one spike

Lily

3 large Marigolds

3 mini Marigolds

Rose-one bloom

Sunflower-one bloom

3 large Zinnias

3 mini Zinnias

### FLOWER ARRANGEMENT

(Flowers may be purchased but must be arranged by exhibitor)

Dining Table Centerpiece

Arrangement for Mantel

(one side view)

Arrangement of Carnations

Arrangement of Gladiolas

Arrangement of Marigolds

Arrangement of Petunias

Arrangement of Roses

Arrangement of Sunflowers

Arrangement of Zinnias

Miscellaneous



## FOOD PRESERVATION

Superintendents:

Ruth Ellen Spencer and Lois Pieper

Entries must be canned by exhibitor using either quart or pint standard jars or jelly jars. No decorations permitted.

Please Note: ALL JARS MUST BE LABELED AND BE SEALED WITH TWO PIECE STANDARD CANNING LIDS. CANNING JAR RINGS MUST BE ON ALL EXHIBITS.

### SOFT SPREADS

Jelly

Jams

Preserves/Conserves

Butters

Honey

Miscellaneous/Unusual

### CANNED VEGETABLES

Tomatoes- Whole or Chunk

Tomato Juice/Sauce

Salsa

Green Beans

Other Vegetable

### PICKLES & RELISHES

Cucumber Pickles- Dill

Cucumber Pickles- Sweet

Pickled Beets

Other Pickled Fruits or Vegetables

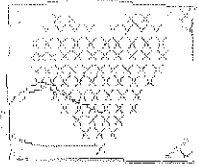
Relish- Any Variety

### FRUITS

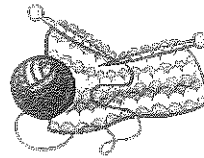
Apples or Pears

Peaches or Other Stone Fruits (plums, cherries, apricots)

Other Fruits



**NEEDLEWORK**  
 Superintendents:  
 Barbara Holscher & Pat Doades



Exhibits must be created by the exhibitor

**\*All pictures and wall hangings must be ready to hang with a wire hanger or dowel rod\***

**CROCHET**  
 Baby Article(s)  
 Afghans and Bedspreads  
 Doilies  
 Doll  
 Accessories (hat, gloves & mittens, handbags etc)  
 Poncho, Cape, or Shawl  
 Scarf  
 Sweater  
 Tablecloth  
 Household Item  
 Miscellaneous

**KNITTING**  
 Baby Article (s)  
 Afghans  
 Bedspreads  
 Accessories  
 (hats, gloves & handbags)  
 Poncho, Cape or shawl  
 Scarf  
 Socks  
 Sweater  
 Household Item  
 Miscellaneous

**NEEDLEPOINT**  
 Picture or Wall Hanging  
 Household Item  
 Plastic Canvas Articles  
 Miscellaneous

**VINTAGE NEEDLEWORK**  
 (Newly Hand- made Items  
 Using Vintage Skills)  
 Candlewicking  
 Hardanger Embroidery  
 Lace Making  
 Needle Punch  
 Swedish Weaving  
 Tatting

**EMBROIDERY**  
 Counted Cross Stitch  
 Cross Stitch  
 Crewel Embroidery  
 Machine Embroidery  
 Silk Ribbon Embroidery  
 Traditional Embroidery

**RUGS**  
 Woven  
 Hooked  
 Braided

**FELTING**  
 Gloves & Mittens  
 Hat  
 Handbag  
 Scarf  
 Miscellaneous

**PHOTOGRAPHY**



Superintendent: Carol Luenebrink  
 Assistant- Kay Berry

This department includes professional and non-professional categories

**Rules:**

1. Any size photo up to 11x14 inches (including matting)
2. Entries must be *permanently mounted on photographic mount board* and be **ready to hang**.
3. *Mats are required, no frame or under glass accepted.*
4. Pictures should not be more than 3 yrs. old.
5. No two photos of the same subject.
6. Hangers will be available for purchase at the entry table for 50 cents each.



**Kim Weber Special Photography Awards**

- A \$15.00 cash award will be given to the photograph showing the most creative digital editing. (A 4"x6" photo of the original must be submitted with the SFX exhibit for comparison purposes.)
- A \$15.00 cash award will be given for the Judge's Choice Award



**Color**  
 Animals  
 Flowers  
 Human Interest  
 Nature (scenic)  
 Portrait  
 Still Life  
 Special Effects  
 Structures  
 Collections

**Black & White**  
 Animals  
 Flowers  
 Human Interest  
 Nature (scenic)  
 Portrait  
 Still Life  
 Special Effects  
 Structures  
 Collections

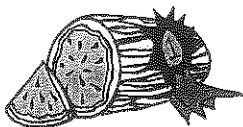
## PRODUCE

Superintendent: Ben Summers

Plates Provided - All Entries Must Have a Class  
(amount needed per exhibit)

Tomatoes Red (5) Yellow (5) Cherry (10/exhibit)	Cucumbers (5) Slicing Pickling	Peppers (5) Sweet Hot
--	--------------------------------------	-----------------------------

**Squash (1)**  
 Summer  
 Winter



**Fruit**  
 Watermelon (1)  
 Cantaloupe (1)  
 Berries (12)  
 -may be on vine  
 or stem

**Cool Season Vegetables**  
 Cabbage (1)  
 Cauliflower (1)  
 Broccoli (1)  
 Brussel Sprouts (5)  
 Miscellaneous

**Warm Season Vegetables**  
 Eggplant (1)  
 Beans, pole or bush (10)  
 Sweet Corn, Shucks removed (5)  
 Okra (5 pods)  
 Miscellaneous

**Unusual, Believe it or not!**  
*Exhibit a freak of nature from: fruit,  
 flowers, vegetables, grain, etc.*  
  
 Heaviest Tomato  
 Heaviest Potato  
 Largest Cucumber  
 Largest Sunflower

**Root Vegetables**  
 Potatoes (5)  
 Carrots, tops removed (4)  
 Beets, tops removed (4)  
 Turnips (2)  
 Onions (4)  
 Miscellaneous

## QUILTS

Superintendent: Joyce Berryman  
Assistant: Janet Singleton

Entries must be made by exhibitor, can be the work of several people including the exhibitor.

Old Quilts and Quilt tops must be in name of owner.

Hand Quilted Wall Hangings Table Runners Potholder Placemat Pillow Quilted clothing	Child Size or Baby Quilts Pieced Embroidered Applique Comforter	Embroidered Hand Machine
Hand Quilted Pieced Foundation Pieced Whole Cloth		Old Quilt or Quilt Top At least 50 years old
Machine Quilted Pieced Foundation Pieced Whole Cloth	Appliquéd Hand Machine Raw Edge	Miscellaneous Comforters Memory Quilts

## SEWING

Superintendents:  
Pat Doades and Barbara Holscher

(Exhibits must be created by the exhibitor)

### ADULT WEAR

Dressy  
Casual  
Decorated Garment  
Formal Wear  
Lingerie  
Miscellaneous

### HOUSEHOLD ITEMS

1-2 pieces  
3 or more pieces  
Miscellaneous

### PURSES/TOTES

Kits  
Original Design  
Pattern  
Miscellaneous

### SPECIALTY SEWING

Costumes  
Doll clothes  
Look-alike outfit  
Miscellaneous

### CHILDREN'S

Dressy  
Play Clothes  
Miscellaneous

### MACHINE EMBROIDERY

Clothing  
-Original Design  
-Machine Appliqué  
Miscellaneous

Household Item  
-Original Design  
-Machine Appliqué  
Miscellaneous

## WOOD CARVING

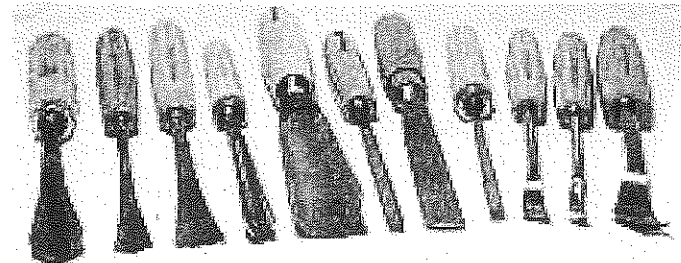
Superintendent: Jo Anna Grillo

~Due to lack of space, projects are limited to  
3 ft x 3 ft.~

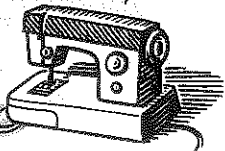
### WOODCARVING

Birds  
Figures  
Animals  
Design/Relief  
Wood Burning/Chip Carving  
Rough Outs  
Miscellaneous

No Kits Allowed



Handmade





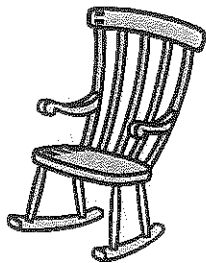
## WOODWORKING

Superintendent: JoAnna Grillo

- ~Entries may be more than one piece (set of toys)
- ~Due to lack of space, projects limited to 12 sq. ft. area
- ~After judging, you may be asked to exhibit only part of the project due to space limitations

### SMALL HANDMADE

Toys (single piece)  
Furniture (less than 2 sq. ft.)  
Miscellaneous



### LARGE HANDMADE

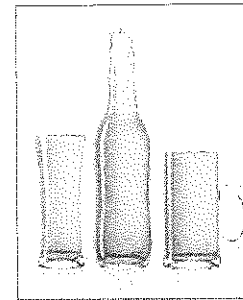
Children's Furniture  
Household Furniture  
Toys (2 or more pieces)  
Outdoor Furniture  
Doll House  
Miscellaneous

### MADE FROM KIT

Small (less than 2x2 feet)  
Large (over 2x2 feet)

## HOME-BREWED BEER & WINE MAKING

Superintendent: Brian Kramer

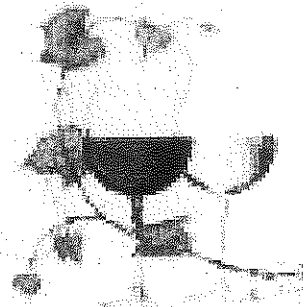


### Home Brewed Beer

American Lager  
IPA  
Porter & Stout (dark)  
Specialty  
Wheat Beer

### Wine Making

Red Wine- Sweet  
Red Wine- Dry  
White Wine- Sweet  
White Wine-Dry  
Dessert Wine  
Specialty Wine



NOTES:

Thank you to all our local businesses,  
organizations and individuals who sponsor Open  
Class.

